

“The lobby is where future generations will begin their journey to realize their full potential and bring their own dreams into reality.”

For more information on building progress, or to donate to the Campaign for Rashi, please visit the Rashi website at www.rashi.org



Welcoming Lobby (continued from front page)

This spring, that reality is taking shape: an 82,000 square foot building designed by HMFH Architects of Cambridge. The lobby will be a beautiful point of entry – an open, airy space highlighted by a two-story stone wall on which the school’s core values will be engraved. Leading to the main office and the auditorium, the lobby will feature a ceramic tile floor, wood paneled ceiling, display cases to showcase artwork, and a special plaque offering *kavod* to the generous donors to our Capital Campaign.

The Millers, who have been passionate supporters of the school since their sons Adam and Matthew enrolled in 1994, are delighted to have their name associated with the lobby. “Just like Rashi, this space has unlimited possibilities,” says Betty Ann. “We believe strongly that Rashi is a portal for children and for families, to go into and to come out of transformed. Rashi transformed our family and many families we know. Having our family name in the lobby, where people will enter to be engaged and transformed into a vibrant community, is really meaningful, and we are profoundly honored.”

“This gift will bear fruit for years,” Dan Miller emphasizes. “Rashi will turn out dozens and dozens of great students every year – young people who understand that they can make a positive difference in the world, who understand their responsibility, who have a strong Jewish identity and pride in our traditions. That feels terrific.”

Betty Ann is looking forward to next year, when she will be able to watch the Rashi building take shape on a weekly basis. As a third year student in Hebrew SeniorLife’s Clinical Pastoral Education Program, she will be a chaplain intern working at the Gloria Adelson Field Health Center at HSL’s NewBridge on the Charles site – the intergenerational campus on which the new Rashi School building is located.



“I too want to make a difference in the world,” Betty Ann says. “Like Rashi students, I know that each of us can actualize our own capacity to make change. I can’t wait for the day when my husband and I can set foot in the lobby of the place where future generations will also walk, as they begin their journey to realize their full potential and bring their own dreams into reality.”

Betty Ann and Dan Miller at the building site this fall.

PRSRRT First-Class
US Postage
PAID
Boston, MA
Permit No. 56407



Building our Future



NEW RASHI SCHOOL TO OPEN IN 2010

MISSION

The mission of the Rashi School, the Boston Area Reform Jewish Day School, is to provide a dynamic, child-centered program of academic excellence that integrates rich secular and Jewish studies curricula and nurtures in its students critical minds and compassionate hearts.



SPRING 2009

Update on the progress of the new Rashi School building



Construction news



Intergenerational programming



Moving to our new home



Capital Campaign report



Rashi

BUILDING OUR FUTURE

Welcoming Lobby is a Physical, Spiritual Entrance



The two-story atrium is the gift of Betty Ann and Daniel Miller.

The lobby is the beginning of the journey. Entering Rashi’s new building, one will be instantly aware of its beauty, its warmth, and its use of light and space in a way that makes all feel welcome. The lobby is the entrance to the physical building as well as the spiritual entrance into a Rashi education.

“The lobby is the beginning of the journey,” says Rashi alumni parent Betty Ann G. Miller. She and her husband Dan, two of the first donors to the Campaign for Rashi, have chosen the lobby as the space that will bear their name.

“When we made our gift to the capital campaign, we weren’t thinking about spaces,” she emphasized. “At that point, a new Rashi building was just a dream. Our investment was in the vision – to bring the dream from potential to reality.”

(continued inside)



Construction Spotlight

Our new school building is taking shape on a beautiful, wooded campus on the Dedham/Needham line. The steel structure is complete, so the size and scale of the building and the play areas are now apparent. The concrete floors are being poured and will be completed by the end of April. Construction will continue in the coming months with exterior masonry work and roofing.

Work will begin on the playing fields in July, followed by the installation of topsoil, irrigation, and the planting of grass in late August.

Current construction photos will be posted on the Rashi website:

www.rashi.org



Building

Students Sign Beam

Rashi's current seventh and eighth graders will graduate before we move to the new building, yet they will have a permanent presence in Rashi's future school. This spring, members of the Classes of 2009 and 2010 signed a steel beam which was then put in place in the gymnasium of the new building. The beam will be exposed so the children's names will be visible to future generations of Rashi students.



Campaign

Campaign for Rashi: Investing In Our Children's Future

Thanks to the hundreds of Rashi parents, grandparents, alumni parents, and community supporters who have so generously donated to the Campaign for Rashi, we have raised close to \$25 million for our new building. This is a wonderful accomplishment, yet we still need to raise an additional \$5 million to complete our Campaign. We are confident that despite the challenging economic climate, we will be able to bring the Campaign for Rashi to a successful close. Our vision – that classes will begin in September 2010 in the new building – is within our reach!

Here is what Boston Jewish community leaders have to say about the importance of supporting the Campaign for Rashi:

I am personally committed to this effort, not only because of its importance to our children and grandchildren and great-grandchildren, but also because of its importance to our parents and grandparents, and because of the connection that Rashi makes between our past and our future. Our children will learn that they have a past through their contact with the residents of Hebrew SeniorLife and, in turn, the residents of Hebrew SeniorLife will learn that they have a future through our Rashi children.



– Barry Shrage, President, Combined Jewish Philanthropies

When our children can study in beautiful spacious, sun filled classrooms, it will enhance their learning. When Rashi students have a sacred place to pray within our school, their worship will be deepened. When our children can exercise and compete in their own gymnasium and playing fields, they will be energized and filled with love for their home turf. Moreover, when the lovely grounds and the beautiful building where we study, pray and come together are actually our own, we will be able to take a special interest and pride in the school. It will really be our home.



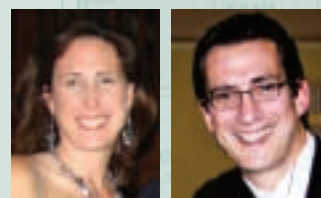
– Rabbi Henry Zoob, Founding President, The Rashi School

Our children are builders – builders of peace in the world, and of a more perfect society on earth. Our children are the builders of our future, the guarantors of our community, the purpose for which we struggle. Our children must have a peerless academy of Reform Jewish day school learning available to them... We must accept the personal responsibility of being builders. In order for our children to build the community we dream of, we owe them a Rashi School fully developed and built.



– Jeffrey Swartz, CEO, Timberland; Rashi Dinner Keynoter

Our dream of a permanent home for Rashi is becoming a reality. As you read this, a steel skeleton is taking shape. We could not be more appreciative of the support that we have received to this point and we thank you, in advance, for your past and future contributions. We are close, but not done with this extraordinary project and we still need your generous help. Please continue to make the Campaign for Rashi one of your long-term philanthropic priorities.



– Jon Sandler & Lisa Wallack, Co-chairs, Campaign for Rashi



Library / Media Center: Located at the heart of the school, this impressive space features a double height ceiling and views of the meadow recreation area and the Charles River just beyond it. The gift of Rashi parents Nancy and Ronald Shalch, the library will have room for 6,000 volumes. There will be seating and workspace for approximately 65 students at any single time as well as a tiered reading nook that can accommodate about 40 kindergarten students. The conference room on the third floor overlooks the library.

Generations

Students and Seniors Join for Intergenerational Programming

As the new Rashi school takes shape on a campus shared with the Hebrew SeniorLife NewBridge on the Charles facility, staff from both Rashi and HSL are meeting to develop intergenerational programs.

Programming began this year as Rashi fourth graders forged relationships with seniors at other local HSL facilities. In the fall, the students decorated the seniors' sukkah, and in December they travelled to Brookline and Roslindale to join HSL residents for a discussion of Robert Kimmel Smith's book *The War with Grandpa*. In addition to sharing reactions to the story of a young boy whose grandfather comes to live with his family, the students and seniors spent time sharing memories of their grandparents and great-grandparents and what they learned from them.

The discussion was lively and appreciated by both groups. We look forward to more programming of this type both next year and in the new building for years to come.



Rashi students and Hebrew SeniorLife residents enjoyed getting together for a book discussion.



Whether it's getting to school, arranging playdates, or putting together a carpool for after-school events, Rashi families like to stay in touch. The carpooler application was designed to help families do just that. Parents who log into the password protected parent site will be able to identify other Rashi families who live within a 1-5 mile radius of their home. There is an easy link to email and phone numbers as well as an ability to get point-to-point directions.

In Phase Two of the carpool application parents will be able to make lists for carpools and the school will use the tool to develop bus routes for the new school. This application is intended to help families feel connected and will be a valuable tool for parents and the school in designing transportation options for our new location.

Transition

Online Carpooler for Rashi Families

