

“This uniting of families [in the auditorium] is what our Jewish future is all about.”

For more information on building progress, or to donate to the Campaign for Rashi, please visit the Rashi website at www.rashi.org



RASHI Building

The auditorium is beginning to take shape.

Auditorium (continued from front page)

secular education her grandchildren are receiving at Rashi. “Reform Jewish day schools play a vital role in that they are inclusive. Just as schools like Rashi bring together diverse members of the Jewish community, so will the auditorium in the new building bring together members of the extended Rashi community.”

The auditorium will also be the home of the school’s highly regarded theater program. “Our new space is equivalent to a high school level theater, offering far more than the typical grade school theater,” stated Head of School Dr. Matt King.

Rashi Theater Specialist Bonny Goldberg agrees that the theater space will bring an added measure of professionalism to drama productions. “The new facilities will be incredible,” she states.

The auditorium, with more than 450 seats, is divided into two sections, with a smaller sunken area of more than 100 seats at the front. This area can be used for smaller productions and lectures and will be an intimate setting for lower school Kabbalat Shabbat. That section is circled by two runways, giving young performers the option of using more of the theater space beyond the stage. The configuration of the auditorium will allow children to strengthen their body awareness as they look up to spectators in the top rows in addition to looking out to the audience.

Rashi will now have its own sound and lighting systems, dressing room, bathroom, and even a backstage “slop sink.” Scenery will be stored behind the stage instead of in the wings onstage, giving the student actors more room backstage, and Bonny anticipates being able to produce “impressive scenery.” There will be a state of the art tech booth at the top level of the auditorium enabling better sound control. Bonny will be able to make better use of multi-media in school shows, and she is considering even adding surtitles to Hebrew plays.



The new space will be a desirable rental facility. Presenters can easily use multi-media, plug in laptops, and take advantage of a built-in descending screen.

The Slifkas look forward to attending many programs in this beautiful new space. “I give a lot of thought to my charitable contributions,” stated Gilda, “and I want to name something that is significant to the project. The auditorium is where everyone will go – for Kabbalat Shabbat, for Generations Day, for class plays and more. This uniting of families is what our Jewish future is all about.”

Gilda and Fred Slifka at the building site before construction began.

PRSRRT First-Class
US Postage
PAID
Boston, MA
Permit No. 56407



15 Walnut Park, Newton, MA 02458

Building our Future



NEW RASHI SCHOOL TO OPEN IN 2010

MISSION

The mission of The Rashi School, the Boston Area Reform Jewish Day School, is to provide a dynamic, child-centered program of academic excellence that integrates rich secular and Jewish studies curricula and nurtures in its students critical minds and compassionate hearts.



FALL 2009

Update on the progress of the new Rashi School building



Construction news



Multi-generational programming



Curricular Activities



Capital Campaign report



Rashi

BUILDING OUR FUTURE

Auditorium Will Enhance Rashi Community Gatherings



The state-of-the-art auditorium is the gift of Gilda and Fred Slifka.

“There is a special feeling at Rashi, a sense of belonging to a warm, welcoming community,” says Rashi grandparent Gilda Slifka. “In the new building, the auditorium will play an important role in fostering and strengthening our community.”

Gilda and her husband Fred made a pacesetter gift in the early days of the Campaign for Rashi and have designated the auditorium as the space that will bear their name. They are strong supporters of both the Campaign for Rashi, serving as Honorary Co-chairs, and of Hebrew SeniorLife (HSL), the organization with which the school is sharing its new campus on the Needham/Dedham line.

“What Rashi is doing is right for children. What HSL is doing is right for seniors, says Fred Slifka. “Putting them together on one campus is a great idea.”

“Jewish education is so important to the continuity of the Jewish people,” emphasizes Gilda, who is delighted with the Jewish and

(continued inside)



Above: The Middle School science room on the top floor of the new building features large windows and a high sloped ceiling.

Right: The top tier of seating in the auditorium.

Below: The cornerstone is now in place at the main entrance.



2010 תשע"א

Construction Spotlight

The construction project continues to be on schedule and on budget! This fall our focus is on completing many of the outside features of the building, including: constructing the playing fields and the retaining walls in and around the kindergarten playground; grading and preparing the walkways and play areas, and making the building weather-tight for the winter.

The interior is rapidly coming into focus. Most of the walls are in place and the building's mechanical, electrical, and plumbing systems are all being installed. The color palette, finishes, furniture, cabinets, and signage are being selected. We are preparing a classroom mock-up – complete with floors, wall color, furniture and fixtures – to see the effect of our design decisions and to test the systems.

Current construction photos are posted on the Rashi website:

www.rashi.org



Five to the Finish: The Final Lap

As you can see from the photos in this brochure, Rashi's new home is fast becoming a reality! It is so wonderful to see that our years of dreaming and planning are resulting in a beautiful facility for our children, grandchildren, and generations to come.

We are so grateful to the hundreds of Rashi parents, grandparents, alumni parents, and community supporters who have so generously donated to the Campaign for Rashi. Your contributions have enabled us to raise 83% of our goal – \$25 million of the \$30 needed for the building project. This is a wonderful accomplishment, yet we still need to raise an additional \$5 million to complete our Campaign.

We have just launched the Five to the Finish phase of the Capital Campaign – what we refer to as the “Final Lap.” This lap is crucial. We must raise this last \$5 million so that we can cross the finish line with the funds we need to be sure that every detail of the new school can be built according to plan.

We are confident that despite the challenging economic climate, the Campaign for Rashi will meet its goal. But we need your help. If you have already contributed, please consider making an additional gift. If you have not yet given, please join us!

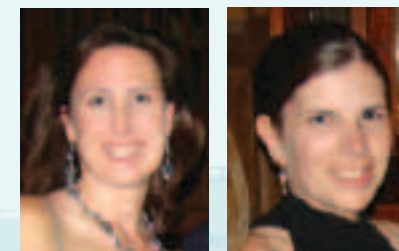
Your campaign contribution can have twice the impact!

Rashi has received a generous **Challenge Grant** from **Dr. Miriam and Sheldon G. Adelson**. We need approximately \$2 million to complete this challenge. Gifts will be matched dollar for dollar by the Adelsons, so your contributions will go twice as far to meet our campaign goal. For details, please contact Barbara Gold in the Development Office: 617-969-7300 x 235 or bgold@rashi.org.

We need everyone's participation – at whatever level is comfortable for your family – to bring Five to the Finish to a successful conclusion.

We thank you for making The Rashi School your philanthropic priority.

– *Dena Rashes & Lisa Wallack*
Co-chairs, Campaign for Rashi



Dena Rashes Named Campaign Co-chair

We are pleased to announce Dena Rashes as Capital Campaign Co-chair, succeeding Jon Sandler, who is now co-chairing the Combined Jewish Philanthropies' 2010 Annual Campaign.

Dena has been a driving force behind many successful Rashi events, including our two recent Annual Dinners. She was also instrumental in establishing and organizing our fall fundraising events, Cocktails in the Catskills and Martinis on Miami Beach. She brings to our campaign a wonderful combination of passion as a Rashi parent and strategic financial acumen from her days as an investment banker. We are incredibly fortunate to have her on board.



The regulation high school size gymnasium will enable Rashi to host games in interscholastic athletics as well as to strengthen our physical education program, which will be renamed health and wellness to conform to current best practices in teaching. Features include bleacher seating for well over 100, numerous transom windows providing ample natural light, an electronic scoreboard and two locker rooms. Conveniently located next to the dining commons and auditorium, it is the perfect place to hold community-wide events. Stonework on the interior walls provides a striking visual to this space, which is the gift of Rashi alumni parents Bob and Marcy Haber.



Multi-generational Programs Will Bring Students and Seniors Together for Events

As the new Rashi school takes shape on a campus shared with the Hebrew SeniorLife (HSL) NewBridge on the Charles facility, staff from both Rashi and HSL are meeting to develop intergenerational programs.

Rashi will invite NewBridge residents to its current building several times during this school year, and Rashi students will travel to NewBridge for programming as well.

Plans include a joint Chanukah program at NewBridge highlighted by a Rashi choral performance, and senior volunteers coming to Rashi to share their expertise at the school's Civics Day and Engineering Design Day programs.

The school also aims to repeat last year's successful book discussion, at which fourth graders and HSL residents shared their reaction to Robert Kimmel Smith's book, *The War with Grandpa*.



Rashi's Mitzvah Makers program has been forging relationships between students and HSL residents for 14 years. Plans are in the works for ongoing programs with the residents of NewBridge on the Charles in the year leading up to the move to the new campus.



Science Activities to Make Use of Site Features

Rashi teachers will be making use of the natural features of the new campus as they plan science programs for the coming year.

“The site offers wonderful opportunities for environmental science activities,” according to Kristen Herbert, Associate Head of School. “There are 26 species of animal life that can be observed on a regular basis, enabling us to do hands-on study of animals in their habitats. Our proximity to the Charles River will benefit second graders in their year-long study of that river.”

