



Meet the Kindergarten Teachers

The Rashi School Virtual Open House
Nov. 19, 2020



Kindergarten Team



Ari Marcovski
Hebrew Teacher



Stephanie Rotsky
Social Justice Coordinator



Fallon Katz
Mathematics Specialist



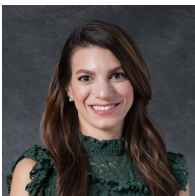
Bonny Goldberg
Theater Director



Alison Fine
Lead Kindergarten Teacher



Erica Smiley
Director of Visual Art



Rachel Liptz
Lead Kindergarten Teacher



Sharon Miller
Lead Kindergarten Teacher



Hanna Perkins
Literacy Specialist



Sherman Goldblum
Social Justice Assistant



Darcey Angelo
School Psychologist



Jennifer Shaw
Fitness & Health Teacher



Julie Koven Levine
Librarian



Rabbi Sharon Clevenger
Dean of Jewish Learning



Nicholas Linder
Director of Music



Sample Weekly Schedule

7:50 - 8:30 Homeroom Morning Meeting	Monday	Tuesday	Wednesday	Thursday	Friday
8:30 - 9:00	Intro to week Jewish Studies	Science	Social Justice Jewish Studies	Science	Jewish Studies Social Justice
9:00 - 9:50	Tefilah	F & H / Snack	F & H / Snack	Lib/Music	F & H / Snack
9:50 - 10:40	Math	Math	Math	Math	Math
10:40 - 11:30	Literacy Recess	Literacy Recess	Literacy Recess	Literacy Recess	Literacy Recess
11:30 - 12:30	Lunch/Rest	Lunch/Rest	Lunch/Rest	Lunch/Rest	Lunch/Rest
12:30 - 1:20	Hebrew/Art	SEL/Hebrew	Hebrew/SEL	Music/Hebrew	Hebrew/Choice
1:20 - 2:10	Art/Hebrew	Hebrew/Science	Science/Hebrew	Hebrew/Library	Choice/Hebrew
2:10 - 3:00	Choice	Choice	Choice	Choice	Kabbalat Shabbat

Jewish Learning and Life



- Joyful Judaism
- Meaningful learning and experiences around Jewish holidays
- Family education programs
- Multigenerational programming with NewBridge on the Charles
- Child-centered worship
- Jewish learning at every grade level, integrated into all subject areas
- Jewish and Israel education curriculum being revamped this year



Social-Emotional Learning with Darcey Angelo

- Morning meeting is a fun, friendly, powerful vehicle to create a positive tone for the start of each day.
- Greeting, Sharing, Activity and Message
- We use SEL to promote the cultural assets that all students bring to the classroom.
- Strong sense of belonging and sense of self.



Following the Group Plan

Social Justice through a Jewish Lens

- Social justice as an academic endeavor
- Family involvement
- Civic engagement
- Examples of social justice “essential questions”

for Kindergarten:

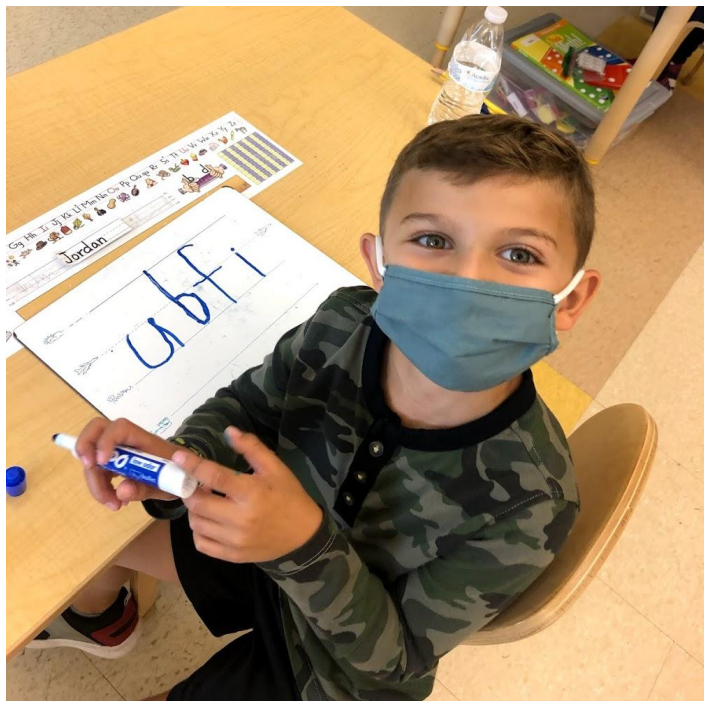
- What does it mean to be hungry?
- What does it mean to be “big?”
- Every person and every creature has importance (Talmud). How does our understanding of this text inform how we think about and treat one another?



Note: Photo taken before COVID-19 pandemic

Literacy

with Sharon Miller



- Emphasize phonemic awareness, phonics word study, high frequency word study, fluency, vocabulary, handwriting, and spelling through multisensory instruction
- Wide variety of text experiences through poetry, narrative, and informational text
- Building reading fluency and comprehension skills
- Library- Learning elements of stories and engaging int author studies

Literacy

with Hanna Perkins



- Share resources with classroom teachers and provide training on best practice
- Differentiate instruction to support and enrich
- Benchmark screenings and progress monitoring data
- Small group instruction
- Tech tools: LexiaCore5 and Raz-Kids

Math

with Alison Fine

- Learn foundational skills and develop number sense
- Manipulatives for exploratory learning; play to discover
- Differentiated instruction
- Not necessarily the answer but how you get there that is important; mistakes help you learn!
- How does math relate to my world?





Math

with Fallon Katz

- Improve mathematical learning
 - Customize resources & environment based on unique student profiles
 - Collaborate with teaching teams regularly
- Provide whole class, small group and 1:1 support
 - Analyze data to inform instruction
- K-5 Scope & Sequence - Student abilities grow, and the curriculum increases in complexity
- Foster a love of math and expand curiosity



Science

with Rachel Liptz



- Problem and project-based program builds the foundation for scientific thinking.
- Yearly theme focuses on changes (cause and effect).
- Program connects students with global real-life problems.
- Students create connections within scientific disciplines and beyond through discovery, experimentation, argumentation, and discussion.

Hebrew - Ari Marcovski



- Lessons taught in Hebrew for immersive language acquisition
- Students show understanding by performing a range of tasks
- Playful, repetitive, scaffolded games and activities build a system of comprehensible input as a foundation for future verbal output, and provide opportunities for differentiated instruction
- Relationship-based learning

Visual and Performing Arts, Fitness & Health



Note: Photo taken before COVID-19 pandemic



Questions or want to learn more?

Admissions@rashi.org